

Remote Port Access Software Installation Instructions

**Version 2.0 Beta
9/15/2010**



16510 Via Esprillo
San Diego, CA 92127

P:800.800.8970
F:858.613.2400

www.systech.com

The information contained in this document is subject to change without notice. Systech provides this information “as is” without warranty of any kind, either expressed or implied, but not limited to the implied warranty of merchantability and fitness for a particular purpose. Systech may improve or change the product at any time without further notice; this document does not represent a commitment on the part of Systech.

Windows is a registered trademark, and Windows NT is a trademark of Microsoft Corporation. Systech is a registered trademark of SYSTECH COMPUTER CORPORATION.

All other product names and services identified in this document are trademarks or registered trademarks of their respective companies and are used throughout this document in editorial fashion only and for the benefit of such companies. No such use, or the use of any trade name, is intended to convey an endorsement or other affiliation with Systech.

© 2010 SYSTECH COMPUTER CORPORATION.

All Rights Reserved.

All copyrights in the RPA Software are owned exclusively by Systech Computer Corporation, and may not be reproduced, distributed, transmitted, displayed or published without the prior written permission of Systech Computer Corporation. You may not alter or remove any copyright or other notice set forth herein.

**Systech Remote Port Access (RPA) Server Client
Software
Installation
Instructions
Revision
2.0**

Congratulations on your purchase of the Systech NDS Unit and RPA software suite!

The minimum configuration for RPA Client is a Windows XP-based (or later) system.

READ THIS BEFORE INSTALLATION!

• You **must** have the following **information before you begin** the installation process. **Systech Customer Service Representative will provide you with the following; upon completion of the Remote Access Port Server Account:**

- **User Name** _____
- **Password** _____
- **RPA Server TCP/IP Address** **207.212.80.167**

• **The RPA Software only runs on the following Operating Systems:** Windows XP (32-Bit), Windows 2000 (32-Bit) and Windows Vista (32-bit). Windows 7 is not currently supported. All 64 bit Windows operating systems are not currently supported.

• **CHOOSE ONLY DEFAULT DIRECTORIES FOR INSTALLATION.** DURING THE INSTALLATION, THREE SCREENS WILL APPEAR TO PROVIDE AN OPPORTUNITY TO ENTER ALTERNATIVE DIRECTORIES FOR INSTALLATION OF THIS SOFTWARE. DO NOT CHANGE THE DEFAULT DIRECTORIES OR THE SOFTWARE WILL NOT WORK.

• **DO NOT REBOOT DURING NATIVECOM INSTALLATION.** AFTER THE INSTALLATION OF NATIVECOM HAS COMPLETED, YOU WILL BE ASKED IF YOU WANT TO RESTART THE COMPUTER. DO NOT RESTART THE COMPUTER AT THAT TIME. YOU MUST RESPOND “NO” FOR THE INSTALLATION TO COMPLETE SUCCESSFULLY.

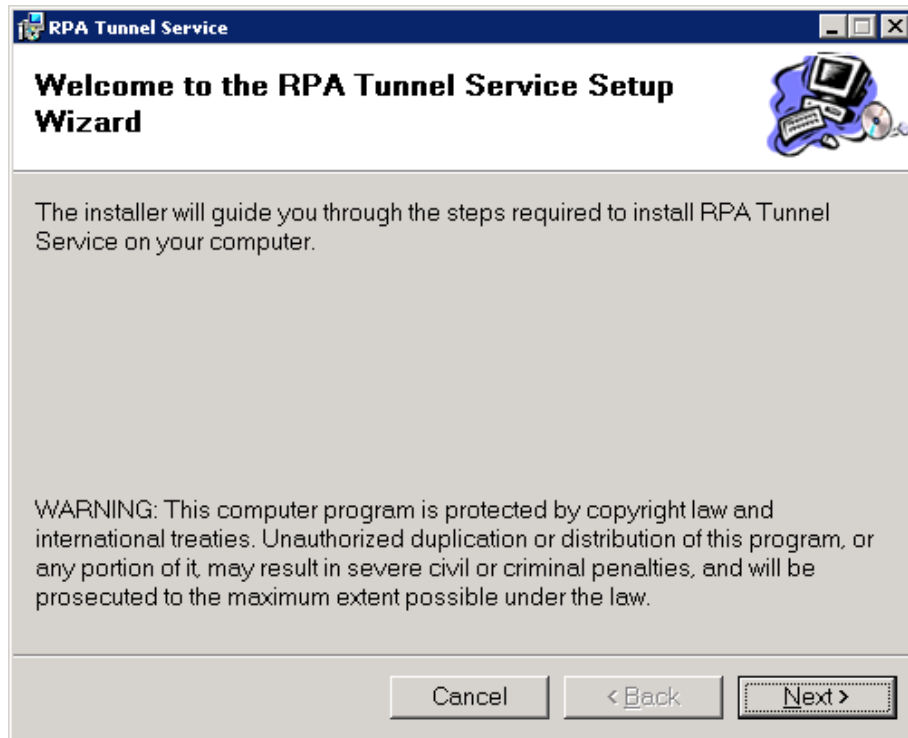
To begin, insert the CD, which came with your Systech NDS unit, into the CD drive on the PC from which you plan to address the remote site/NDS.

1. Click on the **Start** button in the lower left corner of your PC's display screen. Click **Run**. Click **Browse**. Click **My Computer** from the icons on the left side of the popup window. Highlight the CD drive in which you placed the CD. Click the **Open** button. Highlight the **Setup.exe** file. Click the **Open** button. Click the **OK** button.

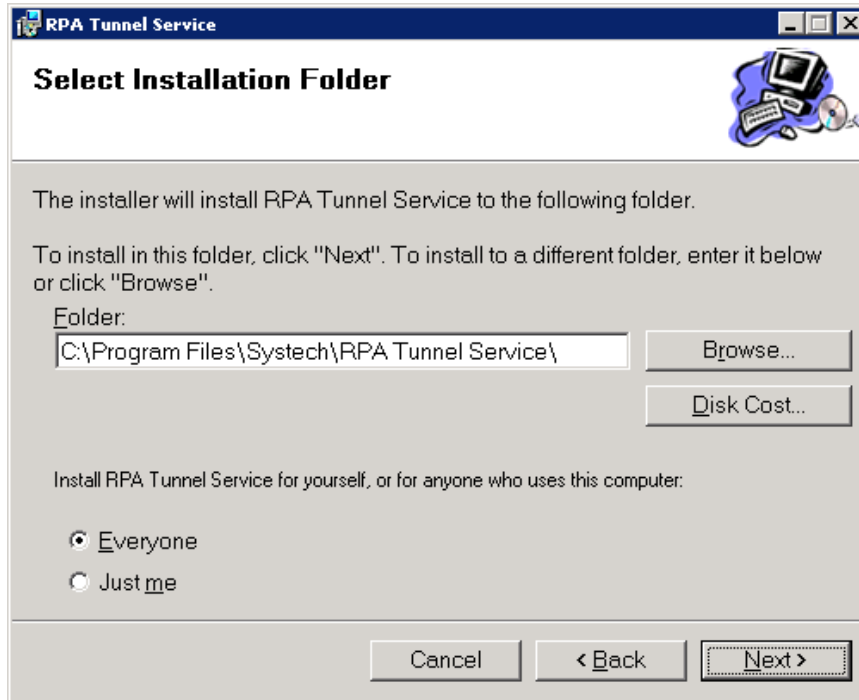
You may be requested to download **.Net framework 3.5 SP1** if this software has not already been installed on your computer.

3. During this installation, the wizard will install three applications: the first will be **Client Tunnel Service and Manager**, and finally by **NativeCOM**.

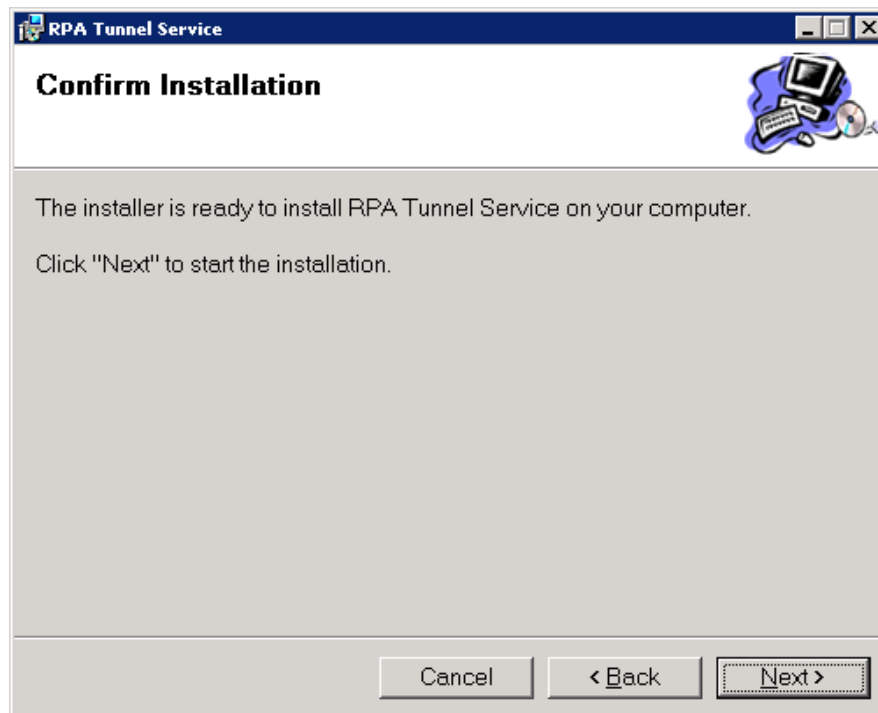
The following screen should be the first to appear on your display. Click the **Next** button to start the installation.



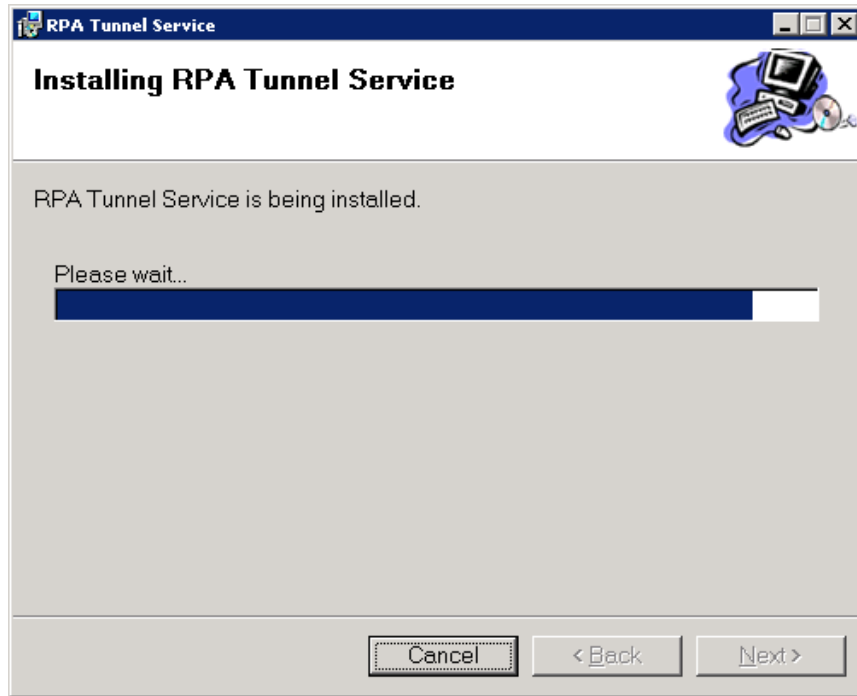
4. When the following screen appears, the target installation location has been already chosen on the local hard drive where **NC Quick Configure** will be installed. **All users must accept the default location**, which is inside the “Program Files\Systemech\NC Quick Configure” folder on the “C” drive. Click “**Next**” when you have accepted the preferred location.



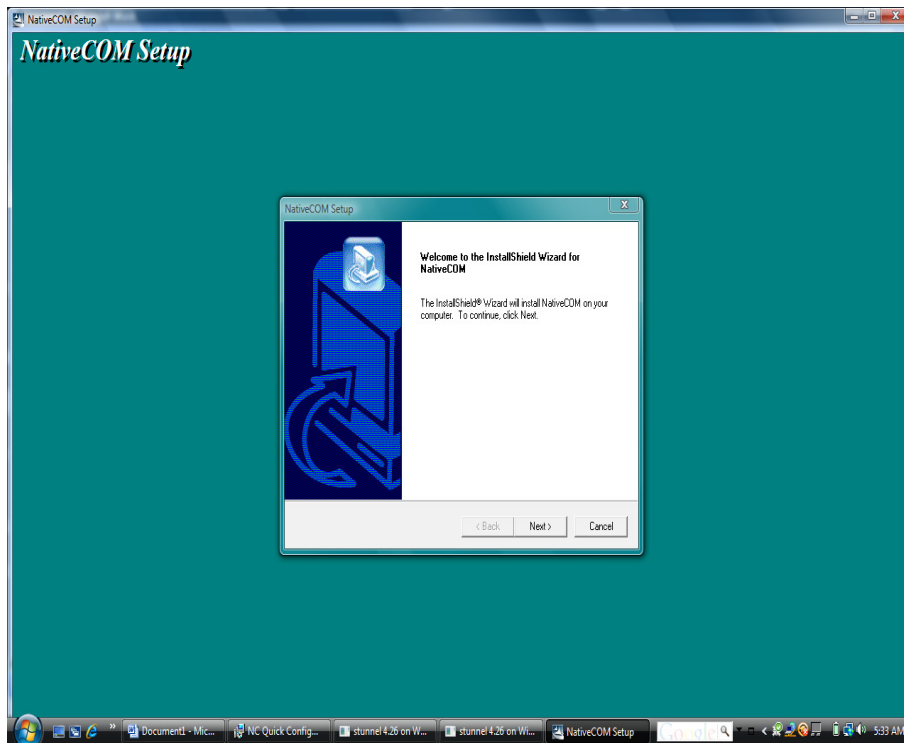
5. After you have selected the target installation directory, the following screen will appear. Click **NEXT** to proceed with the installation. At this time, the system may prompt you to decide whether to permit the installation of **RPA Tunnel Service** to proceed. If so, select **Allow**.



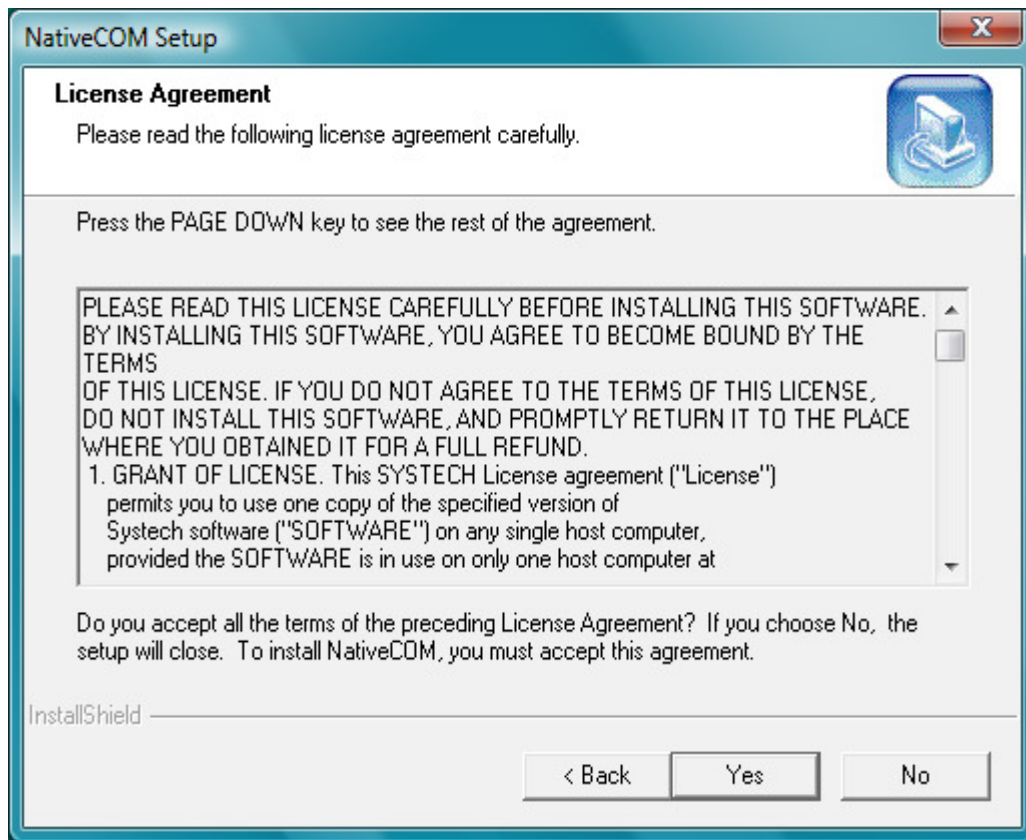
6. During installation of **RPA Tunnel Service**, the following screen will appear.



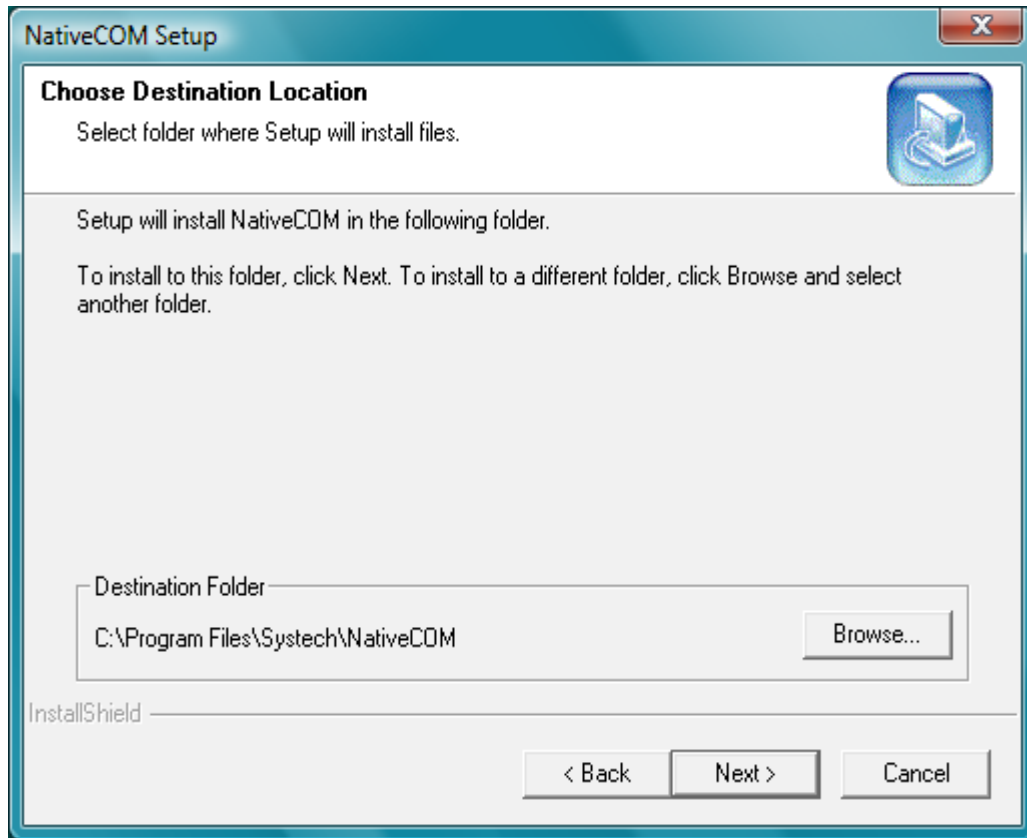
7. The following screen will be displayed for the installation of the third and final application, **NativeCom**. Select the **NEXT** button to proceed.



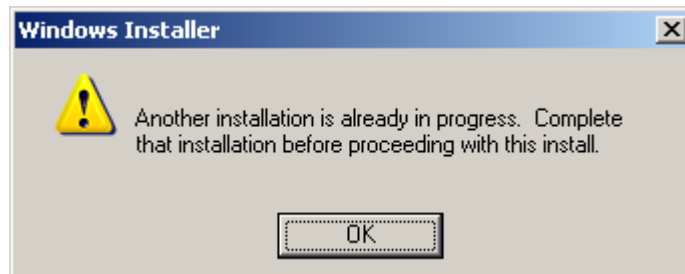
8. The License Agreement for **NativeCOM** will appear. Click **YES** after you have read and agreed to the terms.



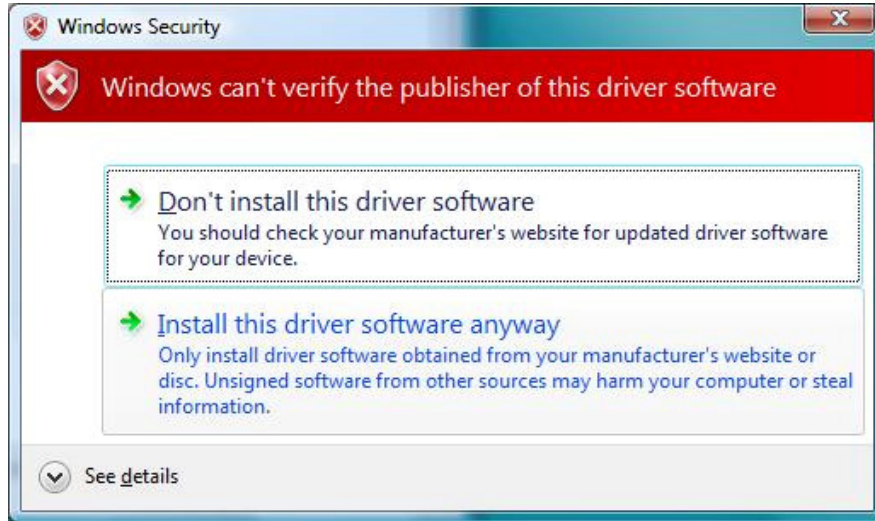
9. The next display identifies the preselected location of the **NativeCom** application. **DO NOT CHANGE THE LOCATION OF NATIVECOM OR THE APPLICATION WILL NOT WORK.** Click the **Next** button to proceed to the next step.



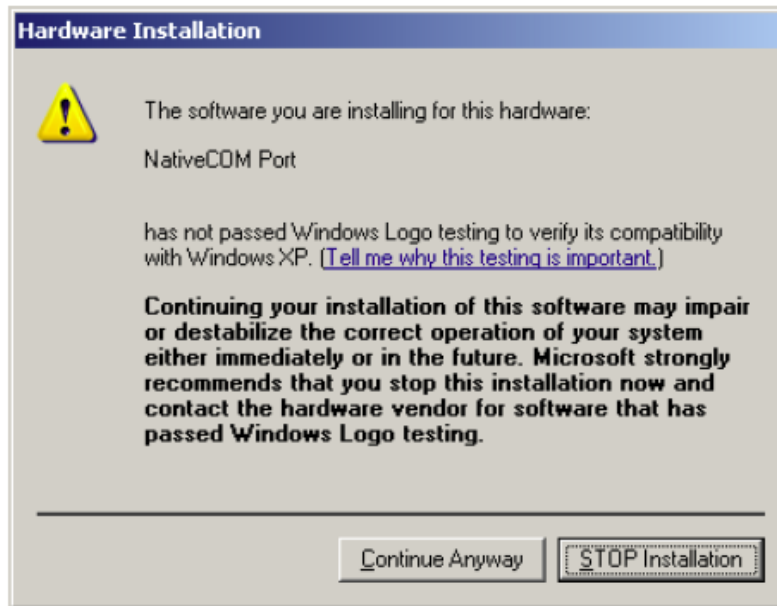
10. The following message will appear during installation. Click OK and proceed.



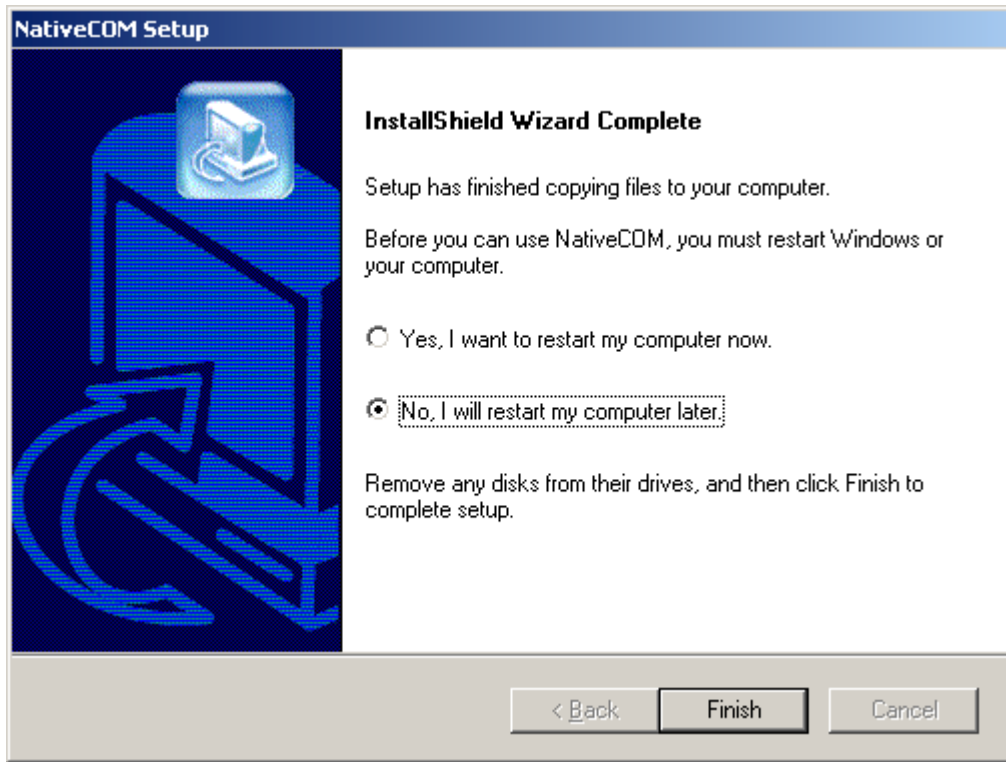
11. During the installation of **NativeCom**, you may see one of the following messages, one or more times. If the following message appears, click the area that says **Install this driver software anyway**.



If the following message appears, click **Continue Anyway**.



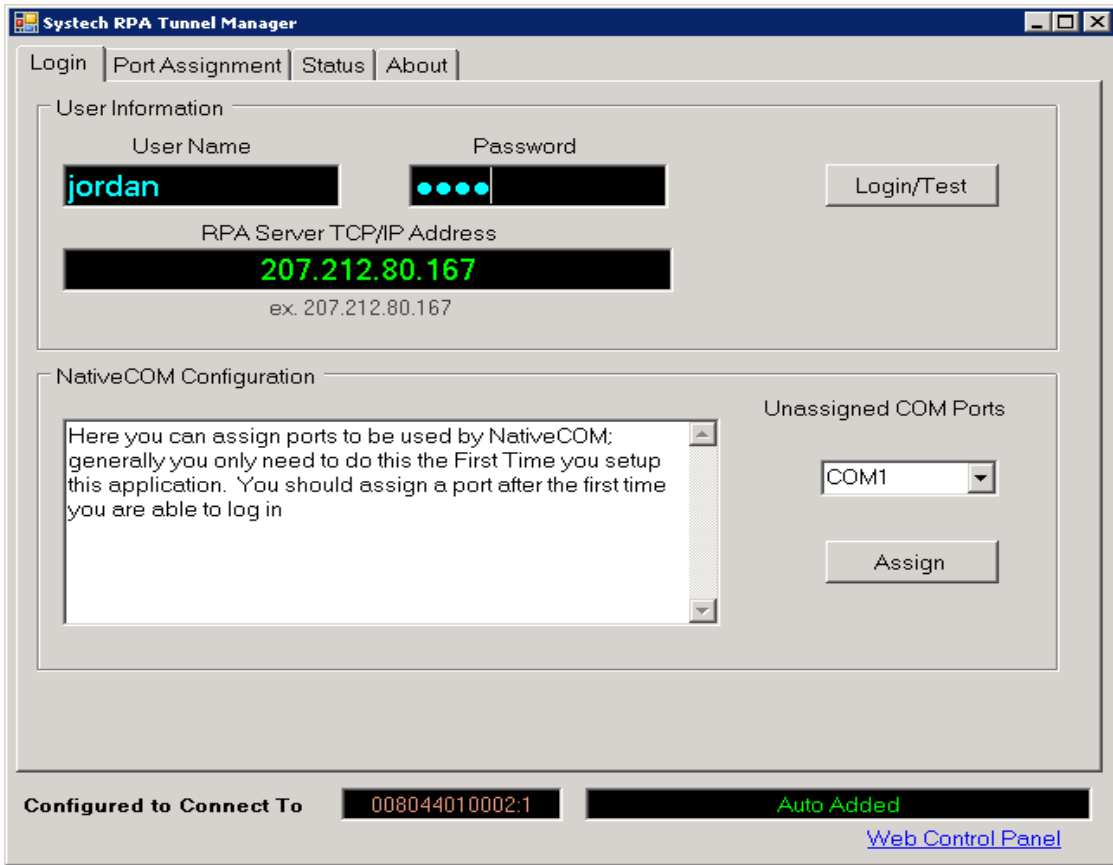
12. When the installation Of NativeCom has been completed, the Wizard will prompt you to restart the computer. Select **No, I will restart my computer later.** and click the **FINISH** button.



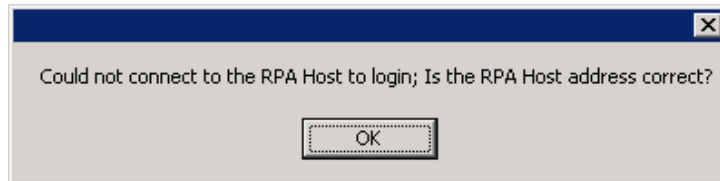
13. After rebooting you should now see the RPA Manager Icon on the task bar; in this image the Systech Icon is shown at the left; you can always double click this Icon to bring up the Client Manager dialog.



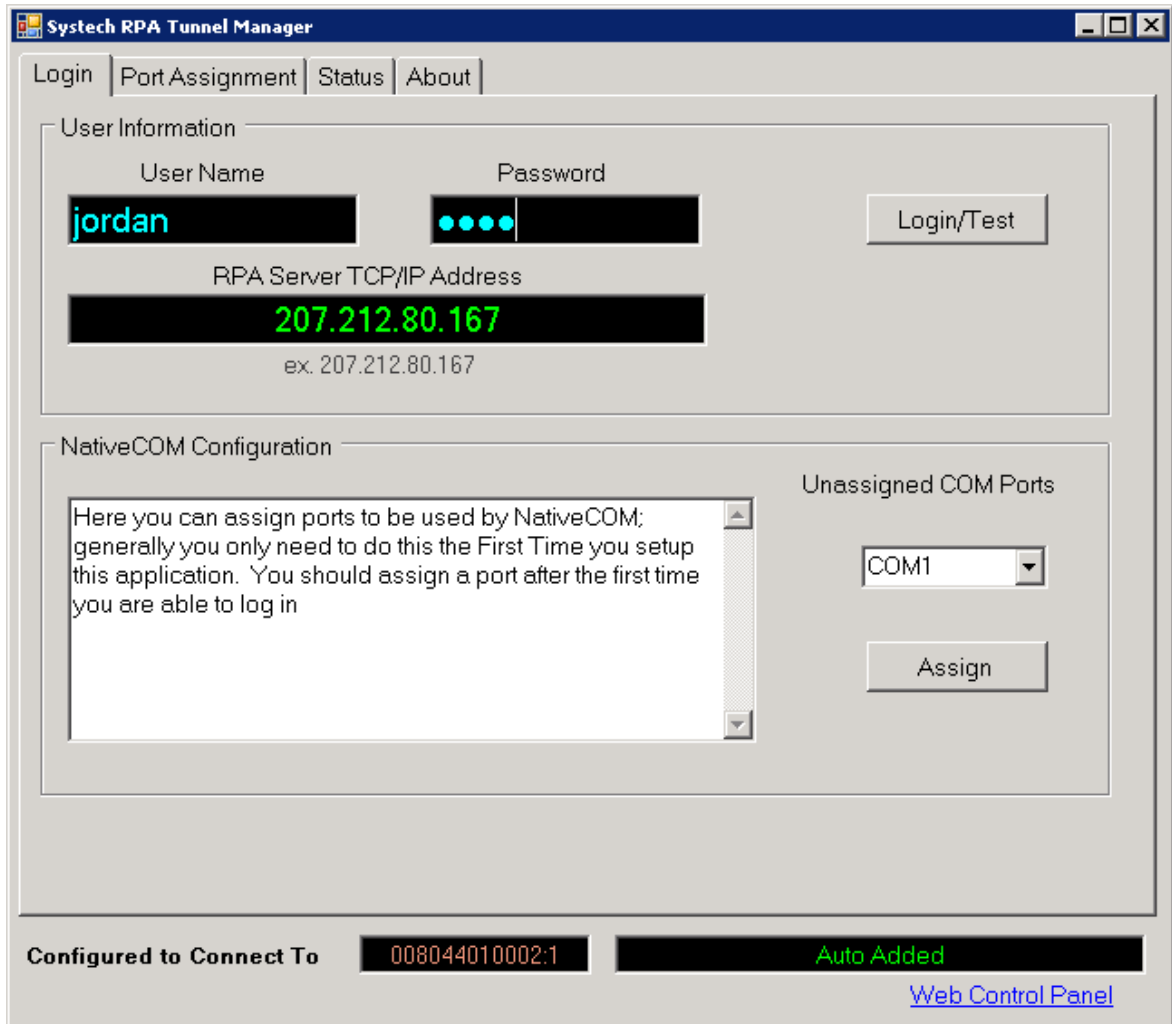
14. The following screen will appear in a separate popup window. There may be a slight delay prior to the appearance of the screen.



15. Since the software is not initially configured as to which server to connect to, you will get this dialog the first time you install it. Press OK to continue to set up the server and login information

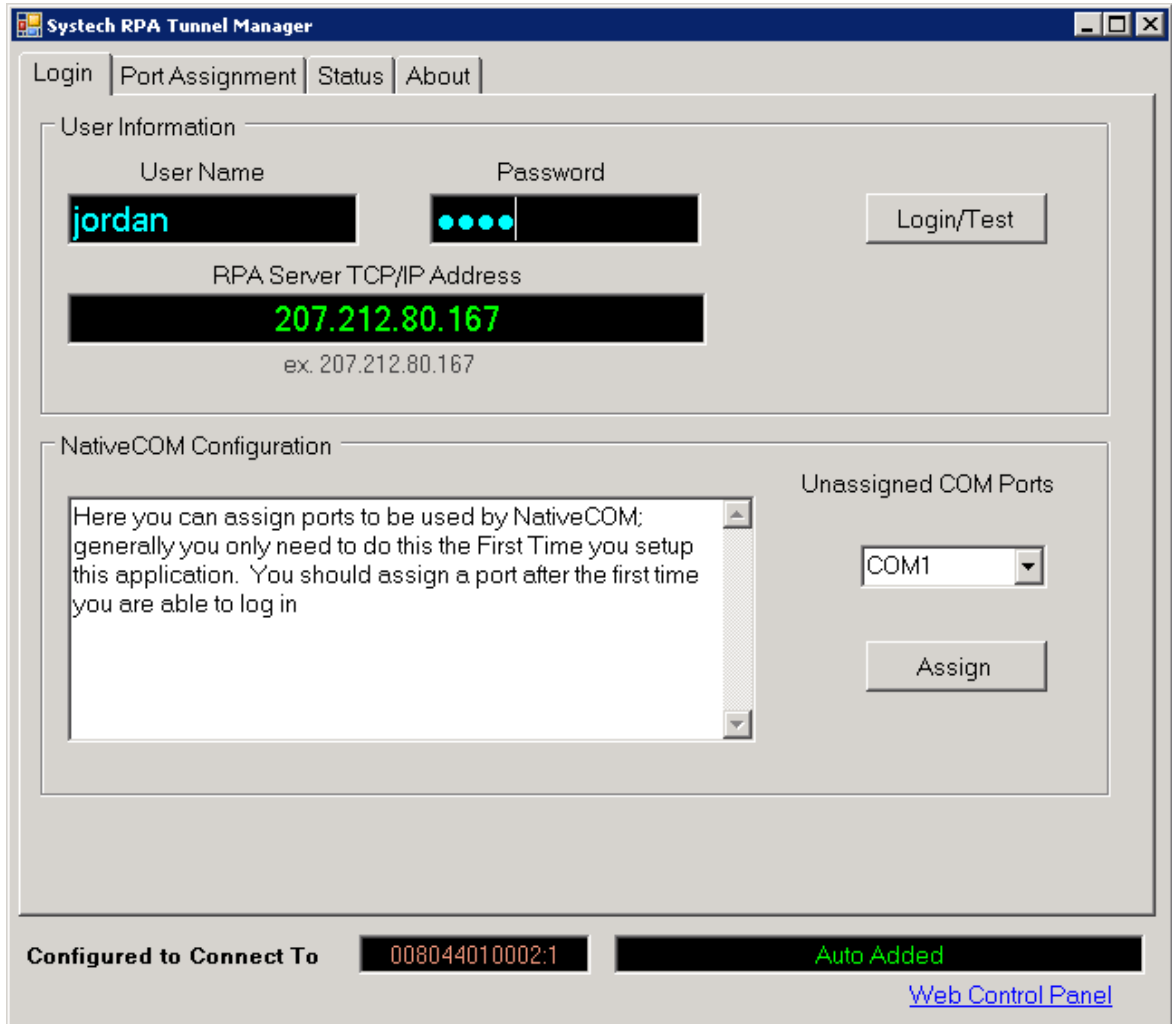


16. Since the software is not initially configured as to which server to connect to, you will get this dialog the first time you install it. Press OK to continue to set up the server and login information.
- Enter the User Name and Password that was provided to you by Systech. Click Login When you have completed entering the fields

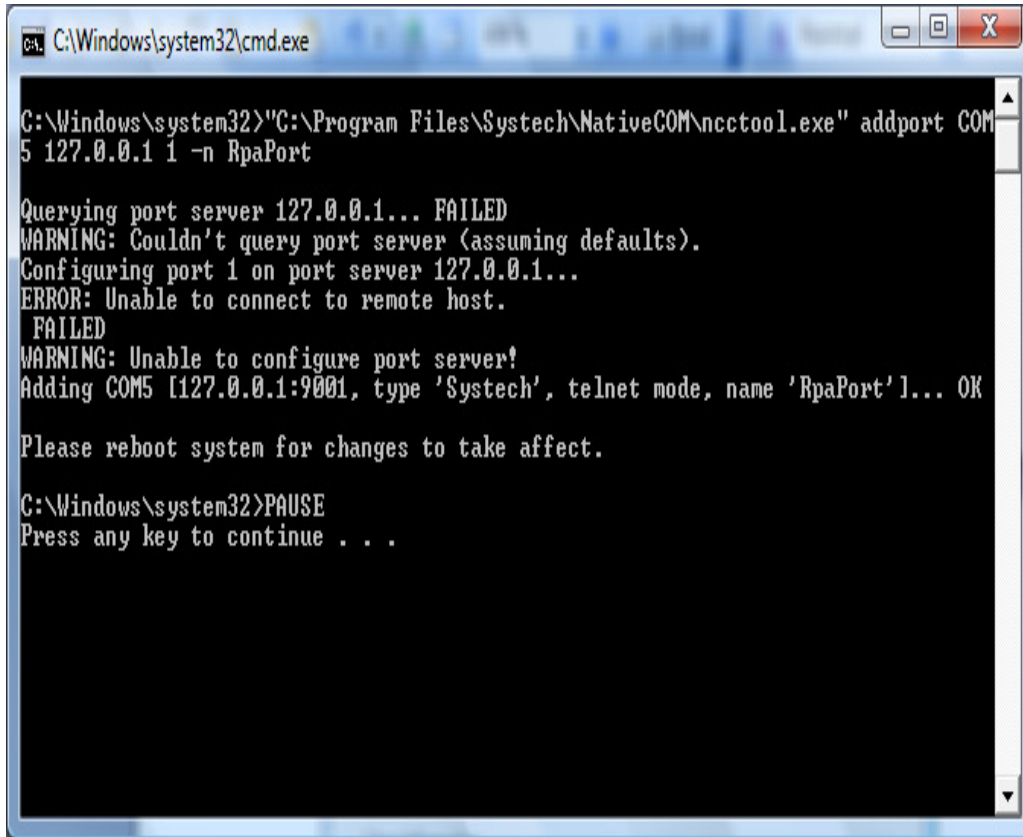


17. The first time you run the manager, you should configure a COM port for use by NativeCom. **Enter the Com Port (that you want to use for communication to the NDS unit).**

Click “Assign” to proceed.



18. The following screen will appear in a popup window. Press any key to continue.



```
C:\Windows\system32\cmd.exe
C:\Windows\system32>"C:\Program Files\Systemech\NativeCOM\ncctool.exe" addport COM5 127.0.0.1 1 -n RpaPort

Querying port server 127.0.0.1... FAILED
WARNING: Couldn't query port server (assuming defaults).
Configuring port 1 on port server 127.0.0.1...
ERROR: Unable to connect to remote host.
FAILED
WARNING: Unable to configure port server!
Adding COM5 [127.0.0.1:9001, type 'Systemech', telnet mode, name 'RpaPort']... OK

Please reboot system for changes to take affect.

C:\Windows\system32>PAUSE
Press any key to continue . . .
```

19. Press a key to dismiss this screen and then manually **Reboot** your computer.

You have completed the Installation and are now ready to use the RPA Client Tunnel!

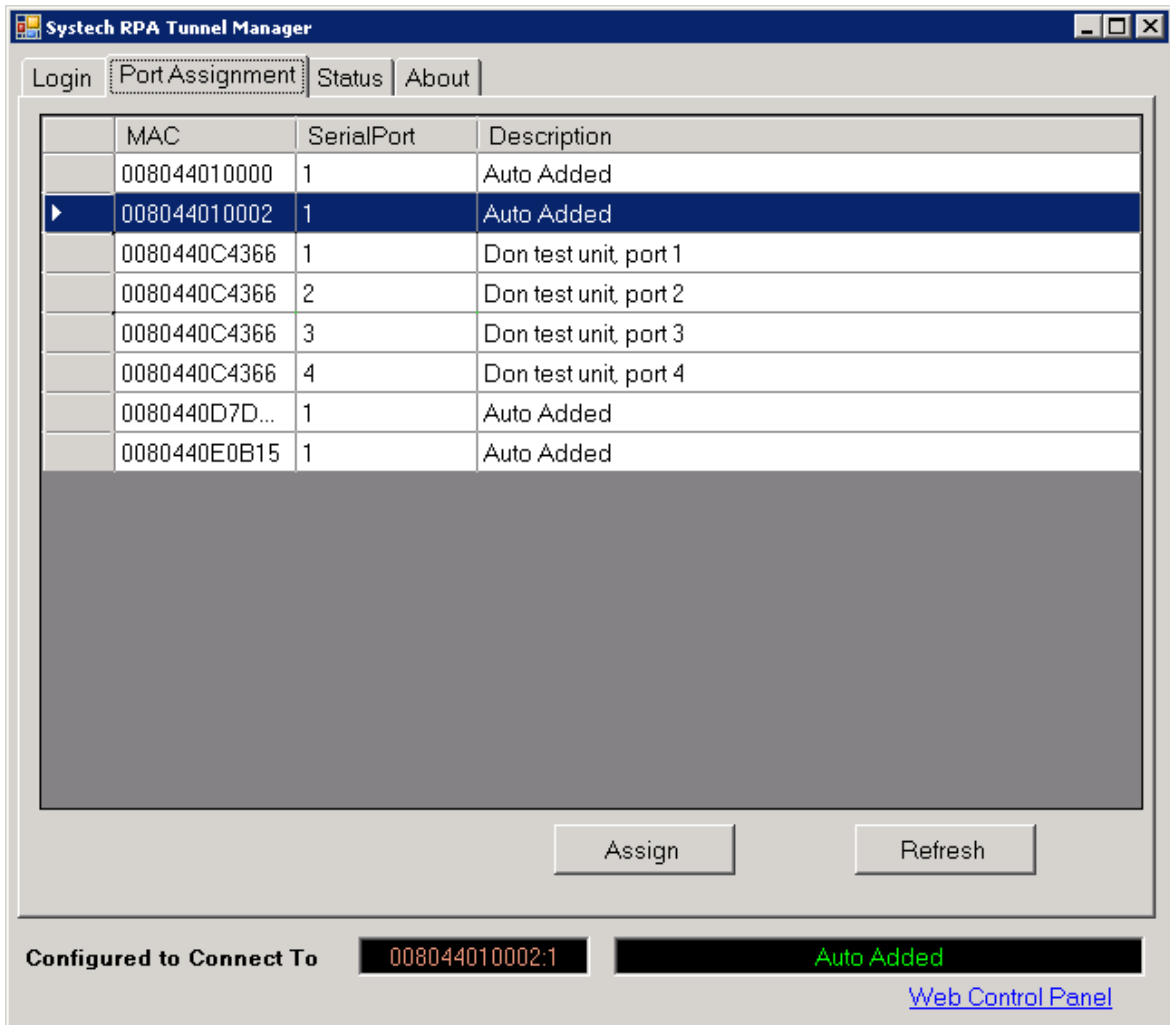
Using the RPA Service

1. Double Click the Systech Icon on the Taskbar to bring up the Client Tunnel Manager GUI



2. Select the Port Assignment tab, and click on the Device you want to connect to and click “Assign”.

You can now connect to the Device you have just assigned by opening the COM port that you assigned to NativeCOM with any application which makes use of COM ports.



OnDemand – Installation Instructions

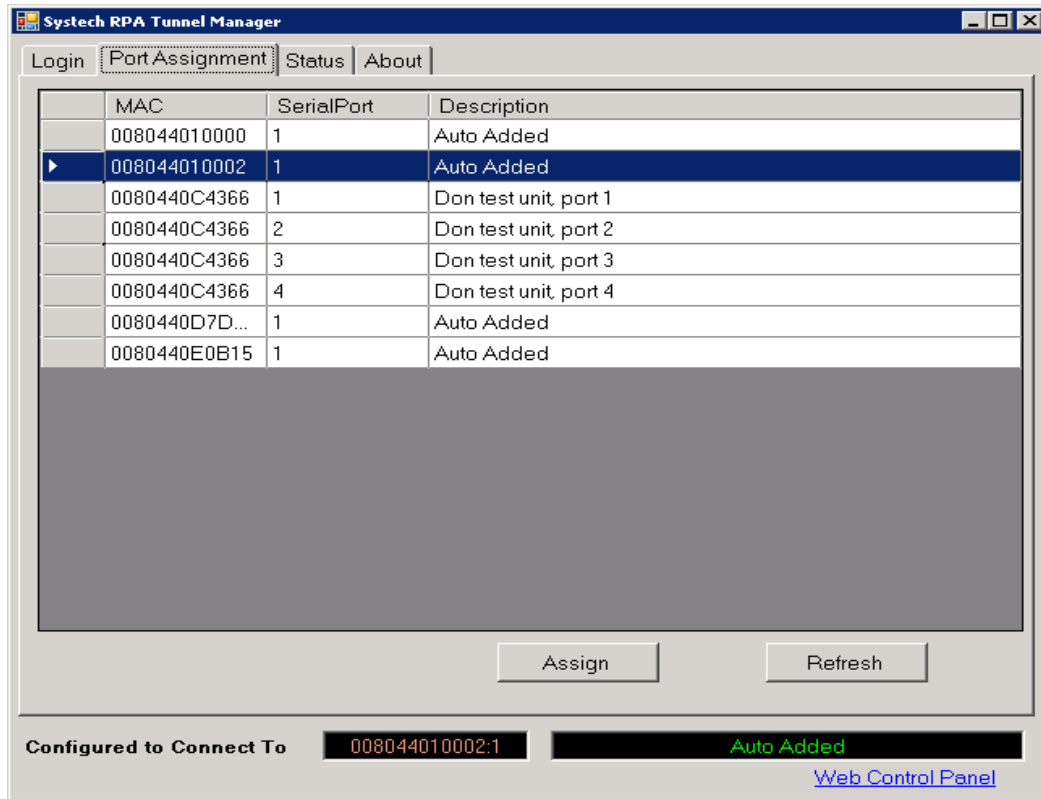
- When you open up your local COM port, you will get notifications in the Taskbar as shown below



- You can safely close the manager window and access it later by right clicking on the taskbar Icon and selecting Restore Window. You may quit the RPA client tunnel manager using the Quit selection.



- You may access the Web Interface by clicking "Web Control Panel" at the lower right corner of the RPA Manager Screen



OnDemand – Installation Instructions

- Log into the web with the same user name and password you used above.

Clicking Device Management will allow you to query and update information about your devices; click the Select link to edit a particular row, and the Save Changes Button to store your changes.

The screenshot shows a web browser window titled "Remote Port Access Web Server - Windows Internet Explorer" with the URL "http://172.16.2.62/DeviceConfig.aspx". The page features the Systech Corporation logo and a navigation menu on the left with options: "Real Time Monitor", "Device Management", "Legacy Mapping", and "Stunnel Management". Below the menu are links for "Change Password" and "Logout Roger Nicholls".

The main content area includes a search section with "Authorized User: roger", checkboxes for "Expired", "Expiring Soon", and "Deleted", a "Text Contains:" field, and a "Query" button. Below this is a table of devices:

	MAC	SerialPort	Description	Location
Select	0080440D3209	1	NDS 6104 - Port 1	
Select	0080440D3209	2	NDS 6104 - Port 2	
Select	0080440D62F0	1	NDS-1111	My Office

Below the table are input fields for editing a device: "MAC" (0080440D3209), "Serial Port" (1), "Description" (NDS 6104 - Port 1), "Location" (Office 1), "Authorized Users" (Roger), "Add User" (roger), "Activation Date" (8/25/2010), "Expiration Date" (10/24/2011), and a "Deleted" checkbox. A "Notes" section contains a text area with "Notes entry here" and a "Save Changes" button.

At the bottom, the footer reads: "RPA Version 2.1.0 Copyright © 2008-2010 Systech. All Rights Reserved."