

# NativeCOM

## Makes Networked Serial Ports Local

Industry-Leading Networking Software Allows Your Windows NT Applications to Address LAN or WAN-based Serial Ports as Local COM Ports

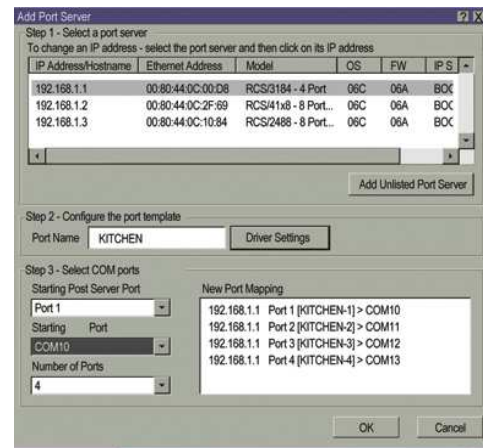
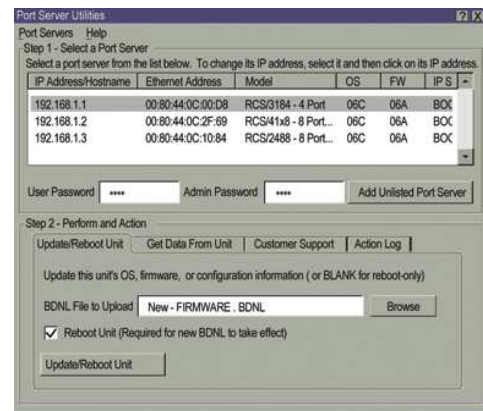
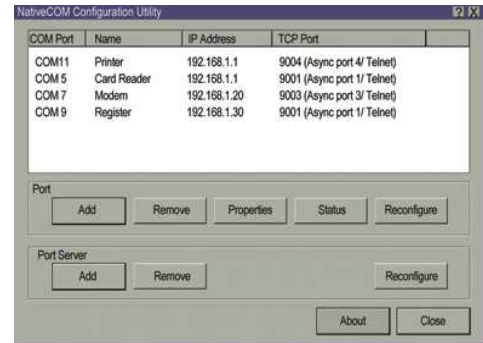
**NativeCOM** from Systech Corporation brings you a powerful technical and cabling advantage in the use of TCP/IP serial communications in all Windows operating environment.

**NativeCOM** empowers your existing Windows applications to address RS-232, RS-422, and RS-485 devices connected to network-attached Systech port servers as if they were local serial (COM) ports. It frees you to deploy important serial devices like payment controllers, grocery scales, kitchen printers, time clocks, and industrial sensors anywhere you need them. It eliminates the hassles of long serial cabling runs and the expense of dedicated, remote PC controllers.

**NativeCOM** installs in minutes with an easy-to-use configuration utility that automatically configures the ports. It supports all COM port parameters and modem signals. And it offers extensive debugging tools for applications which use Win32 and serial communications.

**NativeCOM** uses TCP/IP and Telnet protocols to establish reliable communications across the Ethernet LAN and PPP WAN. And it is transparent to your applications and your users...no porting...no compiling...no linking.

**NativeCOM** ports are fully integrated with your Windows operating environment and support all the Win32 API functions supported by standard COM ports. In fact, the operating system doesn't even know they're not local! The ports interoperate with the local COM ports on your PCs, and are presented wherever COM ports normally appear in the Windows dialog boxes and control panels.



**NativeCOM** is bundled, and licensed free of charge with Systech's leading brand of TCP/IP communications servers. Call 1-800-205-0610 or visit us at [www.systech.com](http://www.systech.com).

